



Installation Manual

AlfaWay Power 261



- ✓ aggressive adhesion
- ✓ object suitable
- ✓ processing without airing time – directly accessible and resilient
- ✓ replaces lots of wet glues
- ✓ for bonding covering on covering
- ✓ free of solvents

Product attributes:

- free of living space contaminations
- free of solvents, chlorine
- free of formaldehyde
- aggressive adhesion
- object suitable
- chair rolls suitable
- suitable for floor heating

Suitable floor coverings:

- coverings with synthetic double backing, non-woven backing
- light needle felt
- ball yarn
- self-lying carpet tiles
- coverings with latex-foam backing

Not suitable for floor coverings containing softeners

Suitable surfaces:

- primed putty, screed, cemented surfaces
- ball yarn
- primed chipboards
- needle felt
- short looped textile coverings

Not suitable for surfaces containing PU-/epoxy resin or softeners

AlfaWay Power 261 was developed for the bonding of carpeted floors, carpet tiles and light needle felt onto various surfaces. It is object and chair rolls suitable (if the subsurface and the floor covering likewise have these qualifications). The bonded new covering is directly usable since no airing time is required.

AlfaWay Power 261 is due its aggressive adhesion ideal for the bonding of carpet on carpet. The old existing floor covering must not extensively be removed but serves as acoustic- and thermal insulation. At the complete seam areas do not remove the release paper in a width of approx. 30-50 cm. This will be removed right before bonding the seam area. Attention should be paid at the seam-cut that **AlfaWay Power 261** will not be cut through (underlay a bar or use a special knife).

AlfaWay Power 261 is not removable without residues! Therefore do not use on existing flooring, if the old condition should be obtained. When removing at a later time, covering might have to be cut in stripes. The adhesive residues do not apply, so that after removing the covering a new covering can directly be bonded again with **AlfaWay Power 261** without a bigger subsurface preparation.

The coverings must be good acclimatized and free of tension. Attention should be paid that the coverings do not underlie a shrinkage- and expansion behavior. They are to be laid without tension.

The subsurface must be permanent dry, clean, free of dust,

free of cracks, tensile- and compression-proof and free of separating agents. Priming where required. The respective country standards for floor covering works are effective (DIN, SIA, OE-Norm etc.). Adhesion ability of subsurface and the new covering must generally be tested by the user. Existing floor coverings have to be bond on full area and ensure sufficient connection to the subsurface. The processing temperature should be at least 15°C (subsurface and covering).

AlfaWay Power 261 is not suitable for outside applications or stairs.

Due to diverse materials, subsurfaces as well as outside influences, users must always carry out their own tests locally.

Shelf life: In the original carton 12 months. Protect for frost.

Packaging units: AlfaWay Power 261

Item-No.	Width x Length	Ro/Pack	Ro/Carton
261 2505	500mm x 25m	2	8
261 2510	1000mm x 25m	1	4

Phone: +49(0)7363-954460
www.alfa-direct.com

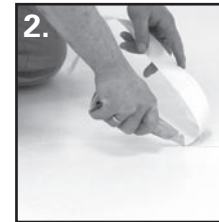
Alfa GmbH

Dr. Rudolf-Schieber-Str. 11-15 • 73463 Westhausen/Germany
Phone: +49 (0)7363-95 44 60 • Fax: +49 (0)7363-95 44 625

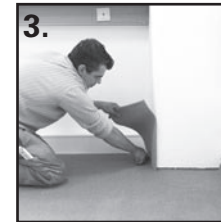
Dry-Fitting in 6 steps



The subsurface must be dry and clean. Apply **AlfaWay Power 261** holohedral and wrinkle-free on the subsurface. Overlap the layers approx. 5 cm



Cut of the overlappings of each layer. Therewith a holohedral fitting is guaranteed.



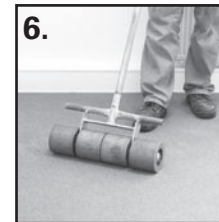
Lay out the acclimatized floor covering on the still protected **AlfaWay Power 261**, bring it into line and cut it roughly.



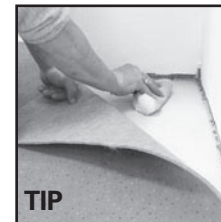
Fold back the floor covering to the half and remove evenly the release paper of **AlfaWay Power 261**.



Lay the floor covering without tension into the adhesive area of **AlfaWay Power 261**. Fold back the other half of the covering and proceed as on step 4.

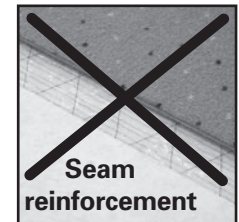


Roll the covering strongly with a roller! Room is useable right away! **AlfaWay Power 261** needs no airing time. Good removable again even after years!



TIP

The adhesion can temporary be neutralised through watering (with a sponge or spray bottle).



Seam reinforcement

Attention should be paid at seam areas that **AlfaWay Power 261** will not be cut through under the seam (underlay a bar or use a special knife). A seam reinforcement is normally not required!



Is the first layer bonded, remove the release paper at the seam area of the second half. Insert second layer out of the middle, along the seam to the left and right and rub on well. Is the seam bonded, remove the rest of the release paper under the covering – stick down.



At the bonding of carpet tiles, remove only so much release paper at the moment as needed. Use the line mark directly on the **AlfaWay Power 261**.

Warranty

We ensure the quality of our products within our general terms and conditions.

Due to diverse materials, subsurfaces as well as outside influences, users must always carry out their own tests locally.

The warranty is excluded, if...
... one of the installation instructions has not been followed...
chemical or mechanical influences react on the product...
at the bonded material plies detachment appears... not worked at the general regulations of the business.

This instruction manual corresponds to the latest standard of knowledge. With arrival of this product information, all previous product information lose their validity. Completion in consequence of new perceptions or developments might follow to any time without advanced notice.